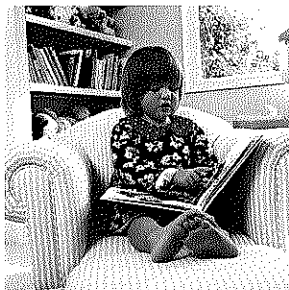


Call the local phone number in your county for help with children, ages birth to kindergarten.



**Service Area 1**

Baker County	800-927-5847
Grant County	800-927-5847
Malheur County	541-473-3905
Morrow County	800-927-5847
Umatilla County	800-927-5847
Union County	800-927-5847
Wallowa County	541-426-4225

**Service Area 2**

Crook County	541-312-1195
Deschutes County	541-312-1195
Gilliam County	541-565-3600
Harney County	541-573-6461
Jefferson County	541-475-3770
Sherman County	541-565-3600
Warm Springs	541-553-3241
Wheeler County	541-565-3600

**Service Area 3**

Douglas County	541-440-4794
Jackson County	541-494-7800
Josephine County	541-956-2059
Klamath County	541-883-4748
Lake County	541-947-3371

**Service Area 4**

Benton County	541-753-1202 x101 877-589-9751
Coos County	541-269-4524
Curry County	541-269-4524
Lincoln County	541-574-2240 x137
Linn County	541-753-1202 x106 877-589-9751

**Service Area 5**

Marion County	503-385-4675
Polk County	503-385-4675
Yamhill County	503-385-4675

**Service Area 6**

Multnomah County	503-262-4100
Hood River County	541-387-5077
Wasco County	541-296-1478

**Service Area 7**

Lane County	800-925-8694 541-346-2578
-------------	------------------------------

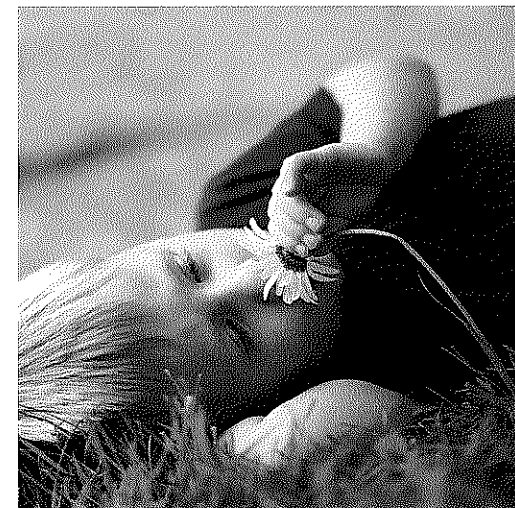
**Service Area 8**

Clatsop County	503-338-3368
Columbia County	503-366-4141
Tillamook County	503-842-8423
Washington County	
English	503-614-1446
Spanish	503-614-1263

**Service Area 9**

Clackamas County	503-675-4097
------------------	--------------

Do you have concerns?



Do you have concerns about how your child walks, talks, hears, sees, plays with toys or responds to others?

Call the local telephone number in your county to get information about screening and evaluation for your child.

Early Intervention & Early Childhood Special Education (EI/ECSE) Services in Oregon



Oregon Department of Education  
255 Capitol Street NE  
Salem, OR 97310-0203

## What is EI/ECSE?

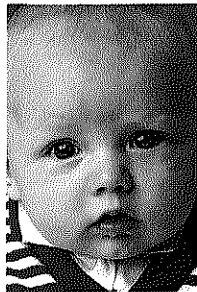


The Early Intervention and Early Childhood Special Education (EI/ECSE) program provides special services to children with disabilities and their parents. These services help the child's development improve. Families can get EI/ECSE services for their children who qualify no matter where they live in Oregon. Each child in the EI/ECSE program has his own plan for services that is custom made and based on what that child and his family need.

## When should I call the EI/ECSE program?

Call the local EI/ECSE program about any baby, toddler or preschool child whose development seems slow and who might need some kind of special services, especially if he has problems with how he:

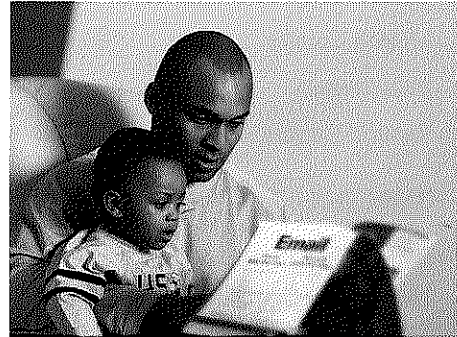
- Talks
- Walks
- Sees
- Hears
- Responds to others
- Plays
- Learns
- Copes with new situations



## Who can call the EI/ECSE program about a child?

Anyone can refer a child to the EI/ECSE program, including:

- Families
- Child care providers
- Preschools
- Friends
- Physicians
- Any community agency



## Where can I call to find out if a child has a developmental delay?

Each county in Oregon has an EI/ECSE referral and evaluation agency. All referrals for screening and evaluation pass through this agency. The phone number for you to call for your local agency is on the back of this brochure.

## What happens after I call about a child?

With the parent's permission, the child may be screened and evaluated to determine if s/he has a delay that makes him/her eligible for EI/ECSE services. If so, an Individual Family Service Plan (IFSP) will be developed to address the child's special learning needs. A team of professionals and the child's parents work together to develop the IFSP.

## What services can children and families get in Oregon?

EI/ECSE services in Oregon are meant to build on the family's strengths to meet the special needs of their child. EI/ECSE specialists give family members, preschool teachers and caregivers ideas and help for working with and teaching the child. This is done in the places where the child usually spends time learning every day.



Here are some examples of EI/ECSE services:

- Giving the family information about their own child's special needs;
- Showing the family how to meet their child's needs at home;
- Helping the family learn how other people and agencies can help them;
- Helping the family learn how to teach the child new skills.

## Is there a cost to families?

No. EI/ECSE services are free to families.

## For additional information contact:

Office of Student Learning & Partnerships  
Oregon Department of Education  
255 Capitol Street NE  
Salem, OR 97310

503-947-5747

Rev. 07-09

[www.ode.state.or.us](http://www.ode.state.or.us)

